

SEMIESTENSIVE

INDICE FAB. 0,75 mc/mq
 COP. MASS. 1/6 mq/mq
 ALT. MASS. m 14,0

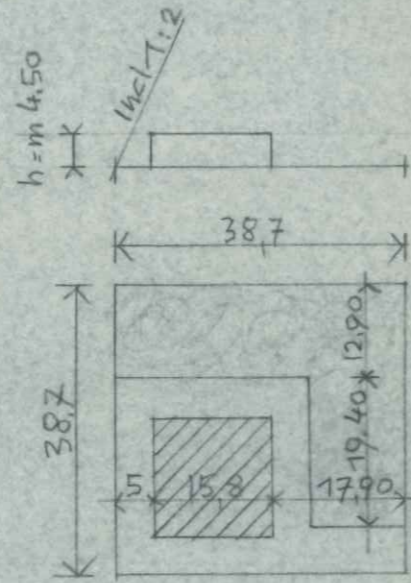
COMUNE DI
 CHIANCIANO

VARIANTE GENERALE
 AL P.R.G.
 SCHEMA EDILIZIO

DENSITA' FONDIARIA
 0,75 MC/MQ

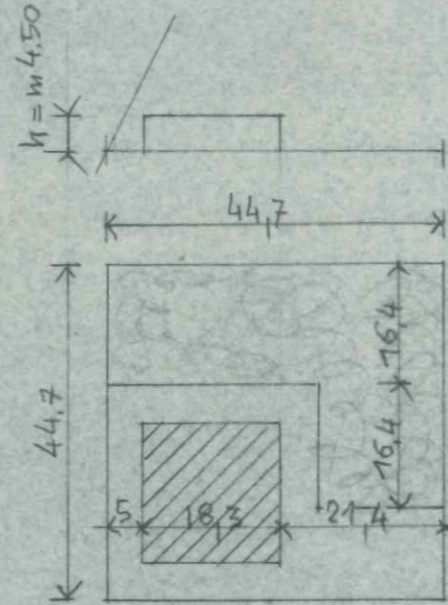
VOLUMI
 DI MISURA
 LIMITATA

SCALA 1:1000



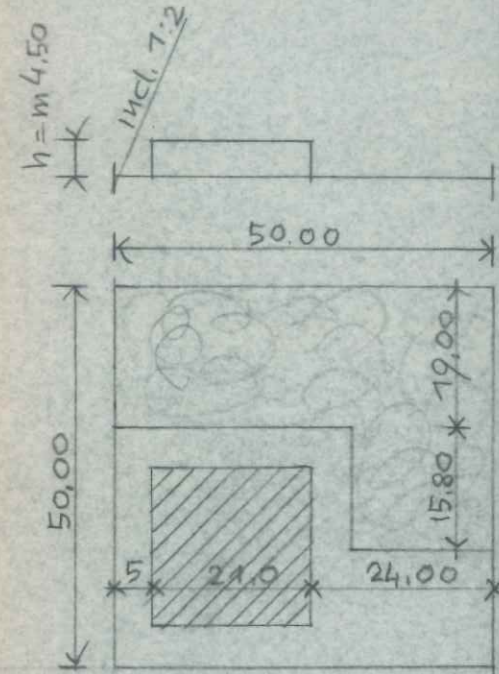
MQ 1,500
 MC 1,125

COPERT. MASS.
 1/6 = mq 250
 m 15,8 x m 15,8
 h = m 4,50
 verde di alberi ad
 alto fusto mq 750



MQ 2,000
 MC 1,500

COPERT. MASS.
 1/6 = mq 333
 m 18,3 x m 18,3
 h = m 4,50
 verde di alberi ad
 alto fusto mq 1,000



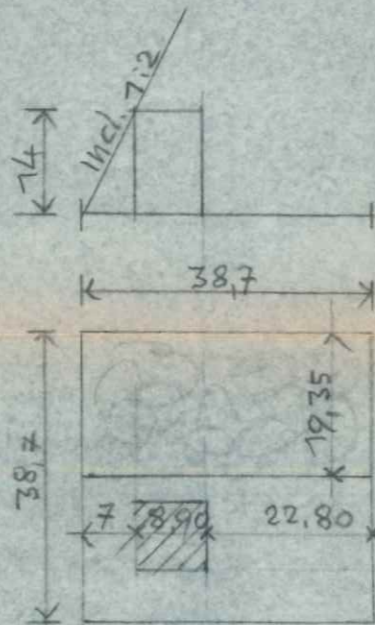
MQ 2,500
 MC 1,875

SUPERF. LOTTO CUBATURA

MINIMI MQ 1,500 (MC 1,125)*

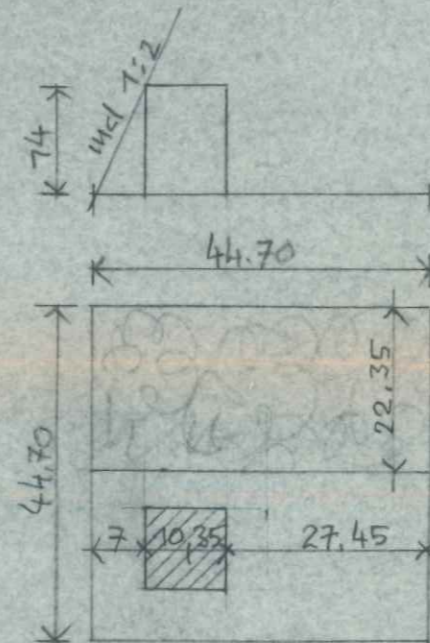
MASSIMI MQ 4,000 MC 3,000

SONO AMMESSE CURATURE MINORI
 FINO A UN LIMITE DI MC 600



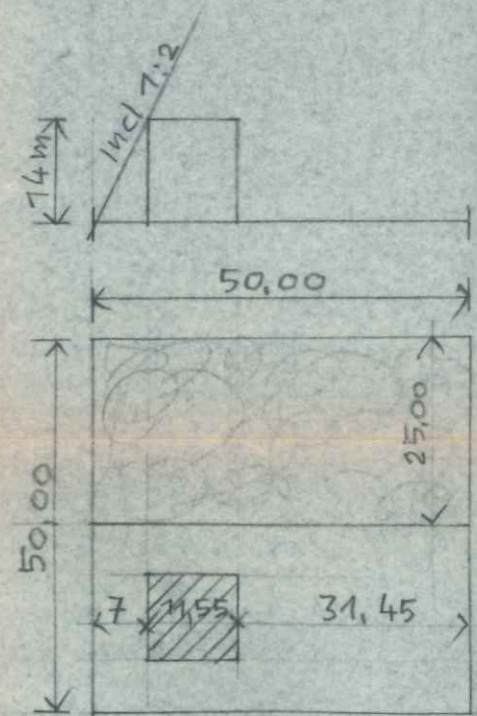
MQ 1,500
 MC 1,125

h max m 14
 mq 80
 m 8,95 x m 8,95
 verde di alberi ad
 alto fusto mq 750

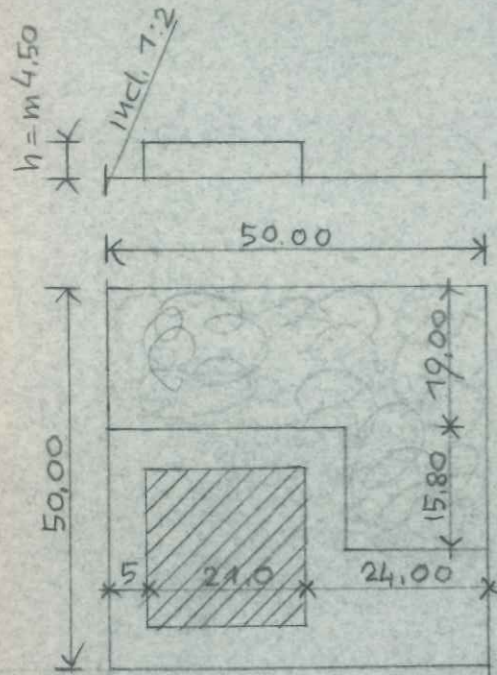


MQ 2,000
 MC 1,500

h max m 14,00
 mq 107
 m 10,35 x m 10,35
 verdi di alberi ad
 alto fusto mq 1,000

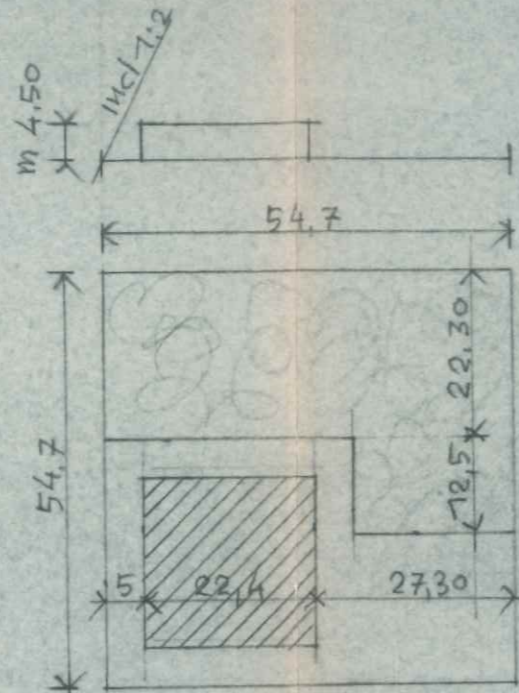


MQ 2,500
 MC 1,875



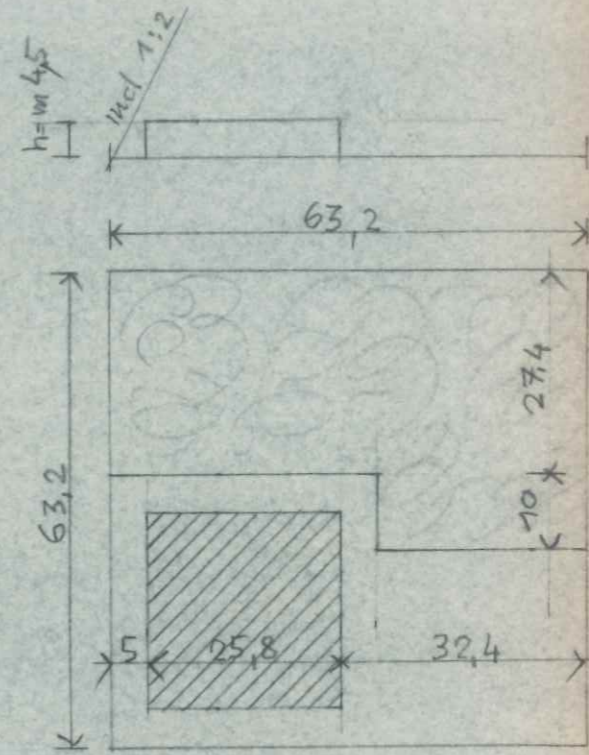
COPERT. MASS.
 1/6 = mq 416
 m 21 x m 21
 h = m 4.50
 verde di alberi ad
 alto fusto mq 1.250

MQ 2,500
 MC 1,875



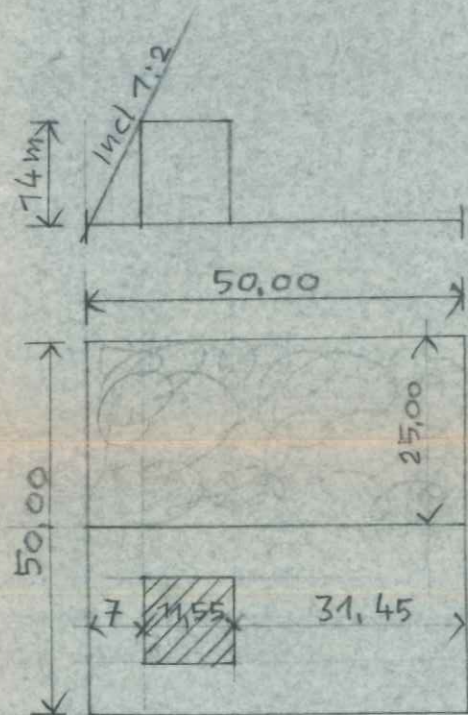
COPERT. MASS.
 1/6 = mq 500
 m 22,4 x m 22,4
 h = m 4,50
 verde di alberi ad
 alto fusto mq 1.500

MQ 3,000
 MC 2,250



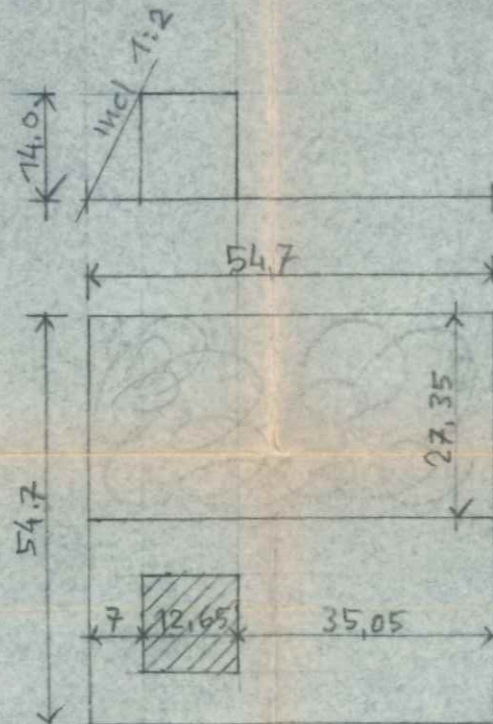
COPERT. MASS.
 1/6 = mq 666
 m 25,8 x m 25,8
 h = m 12,00
 verdi di alberi ad
 alto fusto mq 2.000

MQ 4,000
 MC 3,000



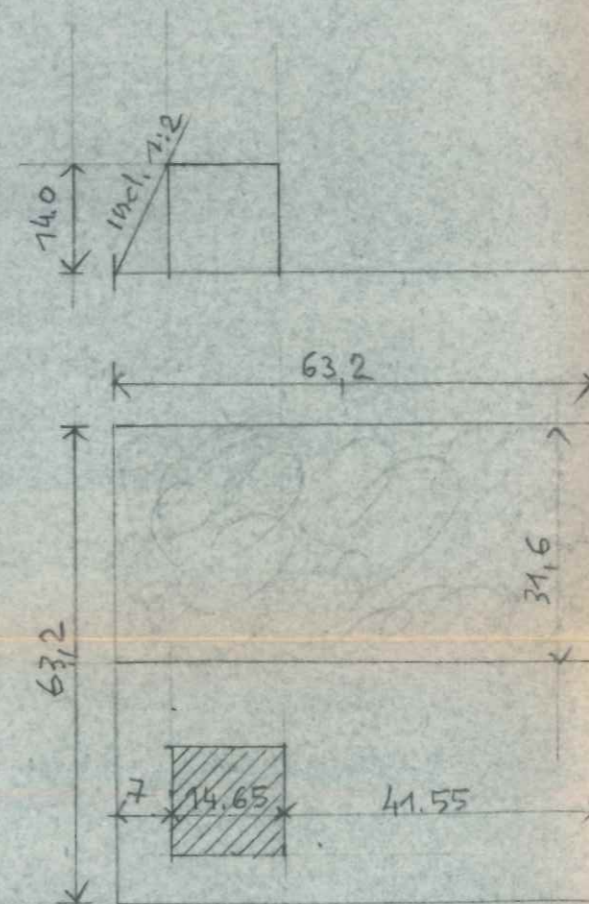
h max m 14.00
 mq 134
 m 11,55 x m 11,55
 verde di alberi ad
 alto fusto mq 1.250

MQ 2,500
 MC 1,875



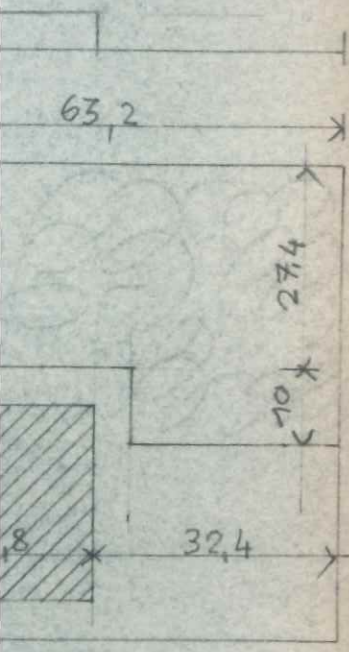
h max m 14
 mq 160
 m 12,65 x m 12,65
 verde di alberi ad
 alto fusto mq 1.500

MQ 3,000
 MC 2,250



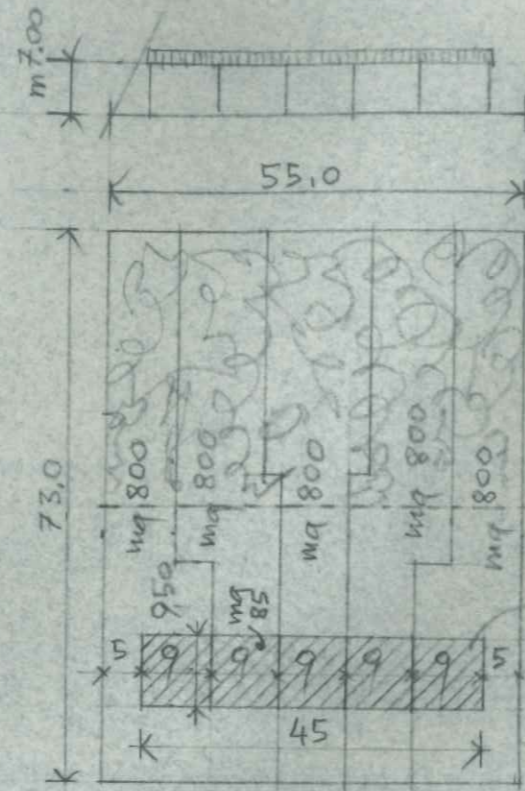
h max m 14
 mq 214
 m 14,65 x m 14,65
 verdi di alberi ad
 alto fusto mq 2.000

MQ 4,000
 MC 3,000



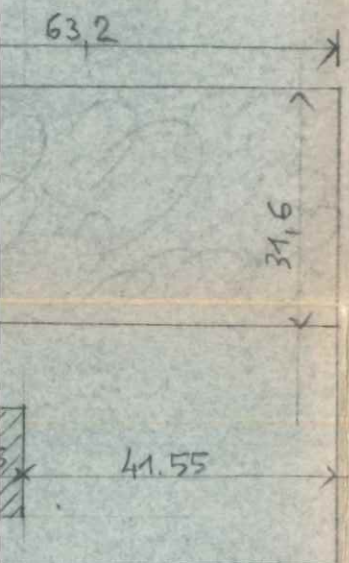
4,000
3,000

COPERT. MASS.
1/6 = mq 666
m 25,8 x m 25,8
h = m 12,00
verdi di alberi ad
alto fusto mq 2.000



MQ 4000
M.C. 3000

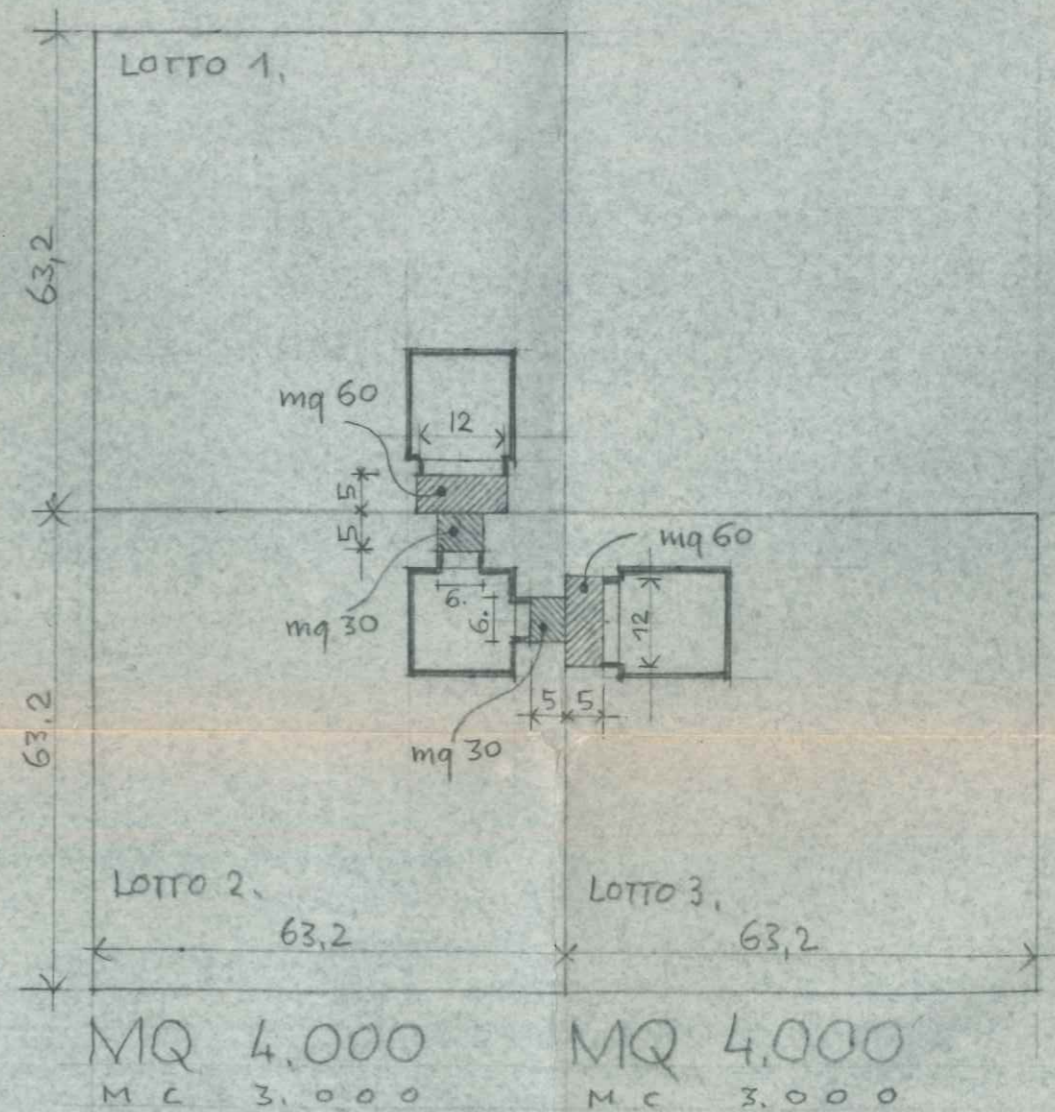
COPERTURA mq 125
m 9,5 x m 45,0
5 unità di mq 25
h = m 7,0
verdi di alberi ad
alto fusto mq 2000



4,000
3,000

h max m 14
mq 214
m 14,65 x m 14,65
verdi di alberi ad
alto fusto mq 2.000

MQ 4,000
M.C. 3,000



MQ 4,000
M.C. 3,000

MQ 4,000
M.C. 3,000