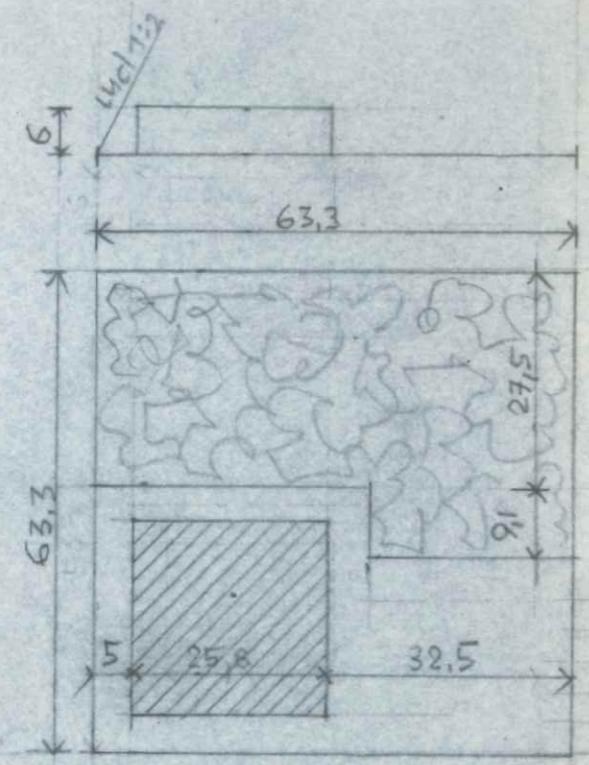


DIS. 3 & art. 13 ZONA L'8' VOLUMI MAGGIORI AREE EDIFICABILI ESTENSIVE
 COMUNE DI CHIANCIANO
 INDICE FAB. 1 mc/mq
 COP. MASS. 1/6
 ALT. MASS. m 22,0

VARIANTE GENERALE AL P.R.G. SCHEMA EDILIZIO

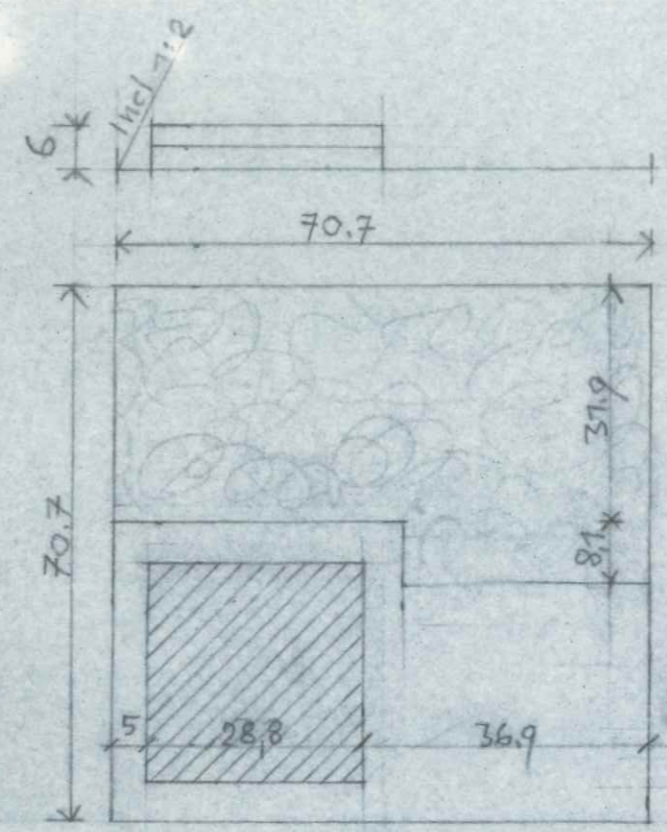
DENSITA' FONDIARIA 1 MC/MQ

VOLUMI DI MISURA MAGGIORE



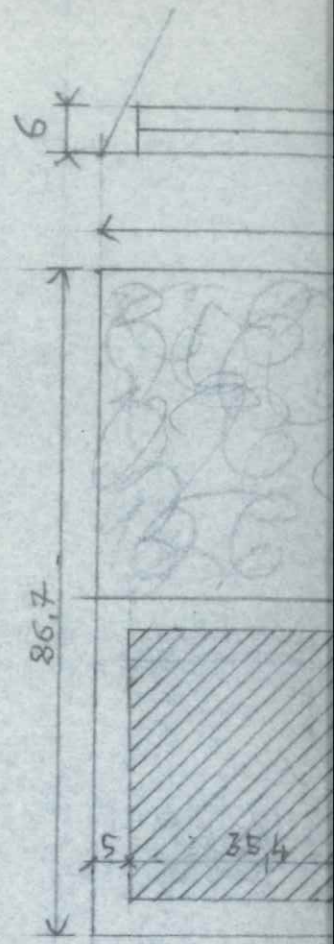
MQ 4.000
M.C. 4.000

COPERT. MASS. 1/6 = mq 666
 m 25,8 x m 25,8
 h = m 6,00
 verde di alberi ad alto fusto mq 2.000



MQ 5.000
M.C. 5.000

COPERT. MASS. 1/6 = mq 833
 m 28,8 x m 28,8
 h = m 6,00
 verde di alto fusto mq 2.500



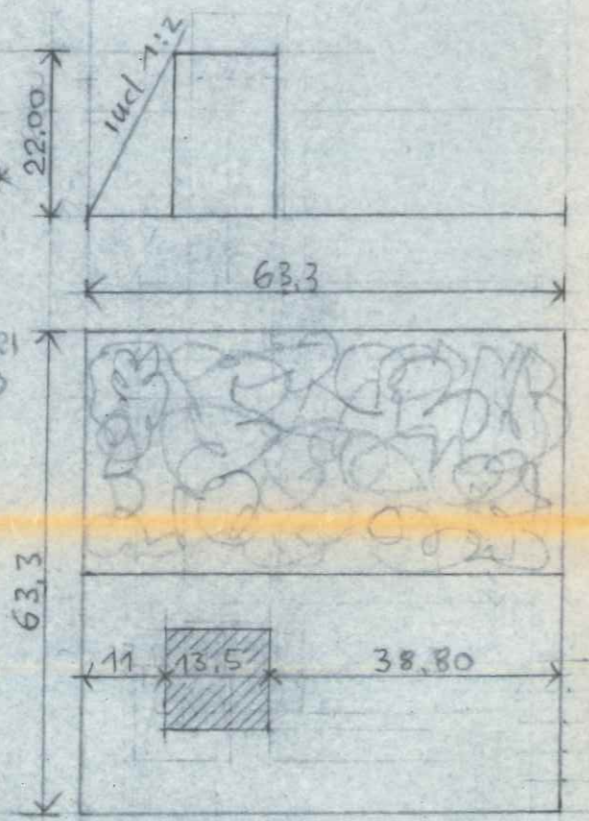
MQ 7.500
M.C. 7.500

SUPERF. LOTTO CUBATURA

MINIMI MQ 4,000 (MC 4,000)*

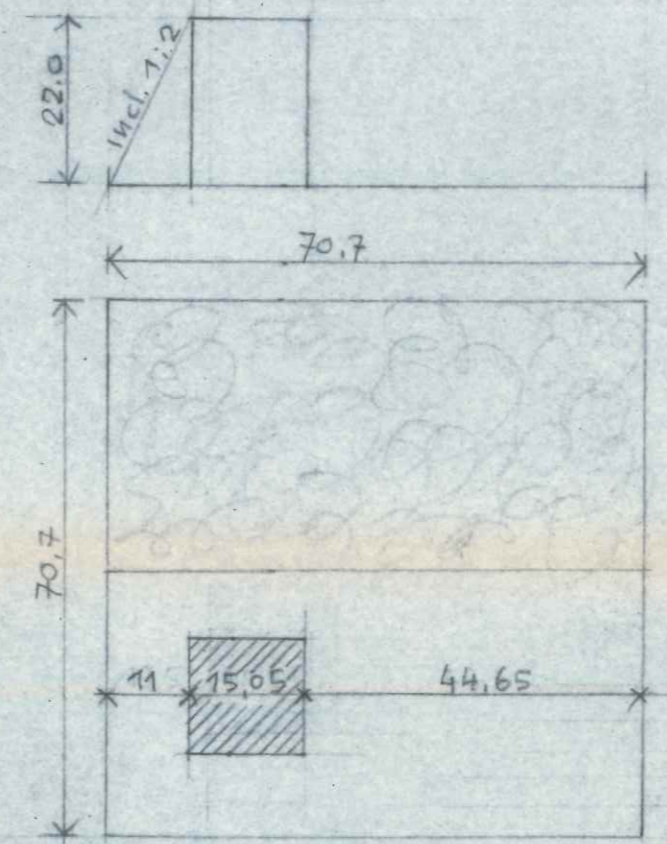
MASSIMI MQ 12,000 MC 12,000

*SONO AMMESSE CUBATURE MINORI FINO A UN LIMITE DI MC 2,000



MQ 4.000
M.C. 4.000

h max m 22
 mq 187
 m 13,5 x m 13,5
 verdi di alberi ad alto fusto.
 mq 2.000



MQ 5.000
M.C. 5.000

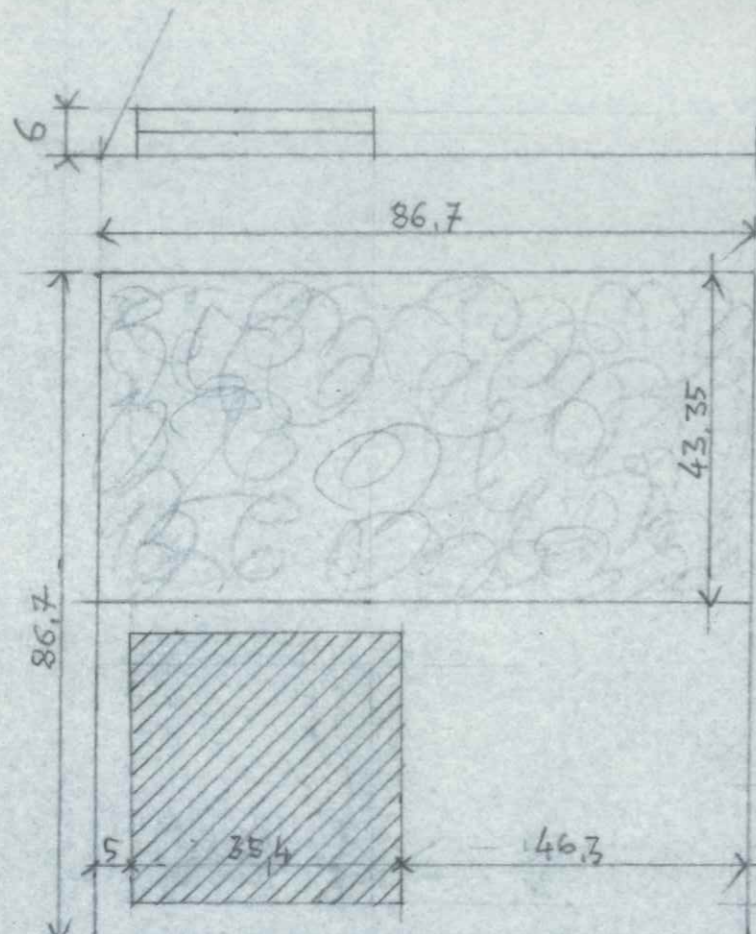
h max m 22
 mq 226
 m 15,05 x m 15,05
 verde ad alto fusto mq 2.500



MQ 7.500
M.C. 7.500

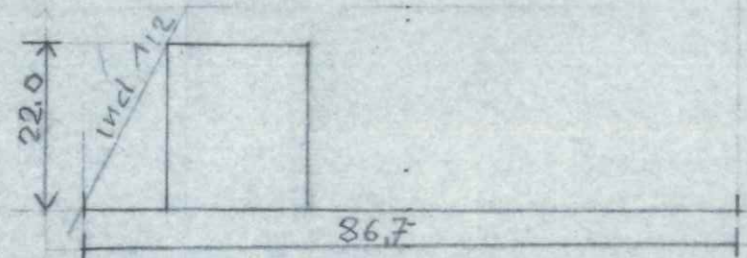
7.6.73
 agg. 4.12.73 (h=22)

DIS. 3 & art. 13 ZONA L'8'



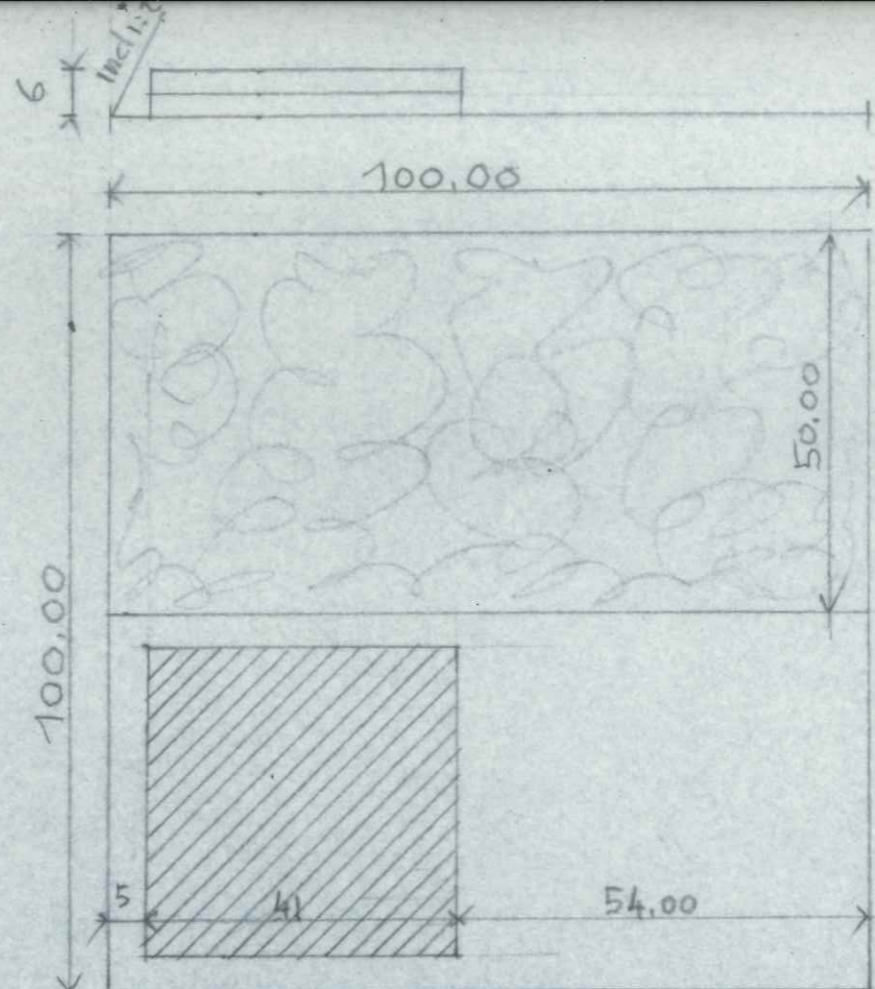
COPERT. MASS.
 1/6 = mq 1250
 35,4 x m 35,4
 verde ad alto
 fusto mq 3750

MQ 7.500
 MC 7.500



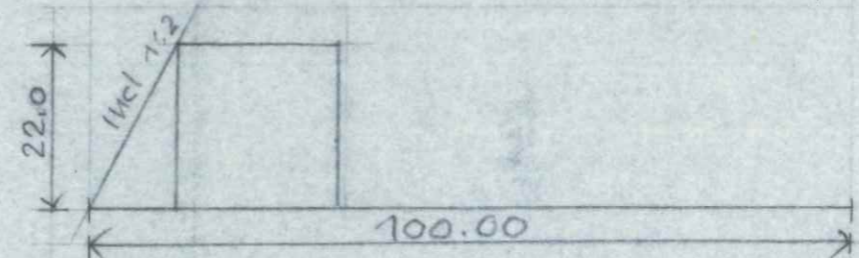
h max m 22,00
 mq 342
 m 18,45 x m 18,45
 verde ad alto
 fusto mq 3750

MQ 7.500
 MC 7.500



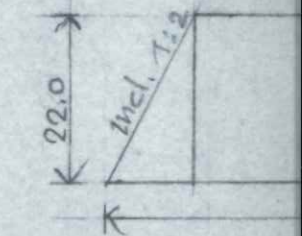
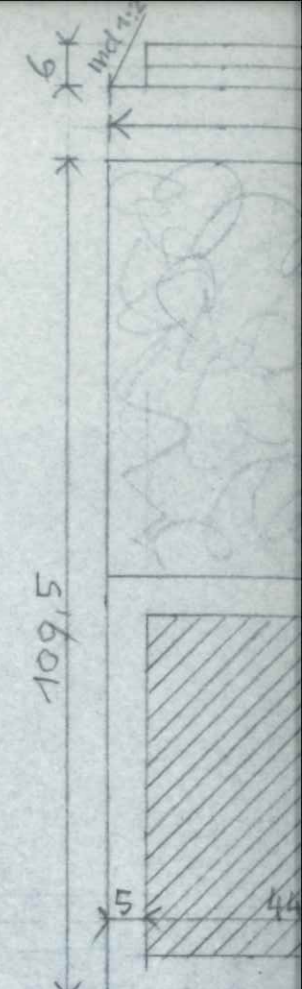
COPERT. MASS.
 1/6 = mq 1666
 m 41 x m 41
 h. = m 6,00
 verde ad alto
 fusto mq 5.000

MQ 10.000
 MC 10.000



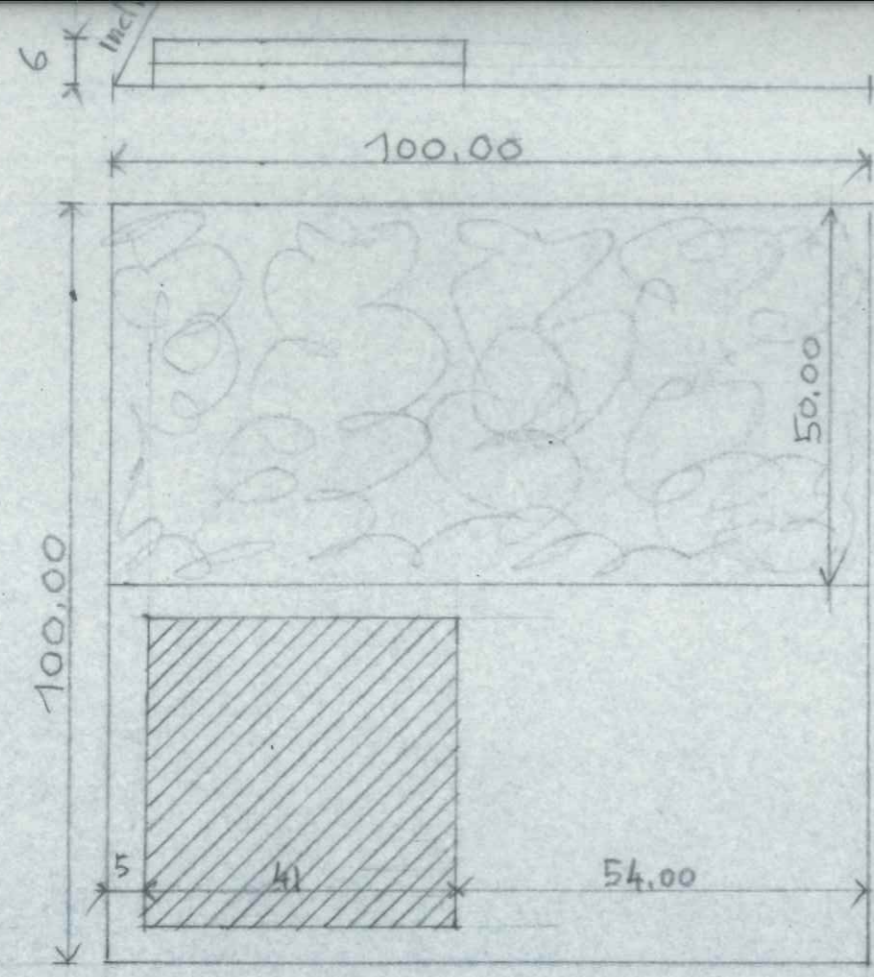
h max m 22,00
 mq 454
 m 21,3 x m 21,3
 verde ad alto
 fusto mq 5.000

MQ 10.000
 MC 10.000



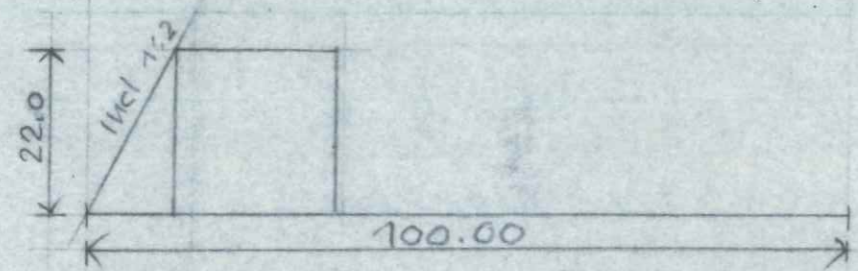
MQ 10.000
 MC 10.000

MASS.
 1250
 m 35,4
 ad alto
 mq 3750



COPERT. MASS.
 $1/6 = \text{mq } 1666$
 $m 41 \times m 41$
 $h = m 6.00$
 verde ad alto
 fusto mq 5.000

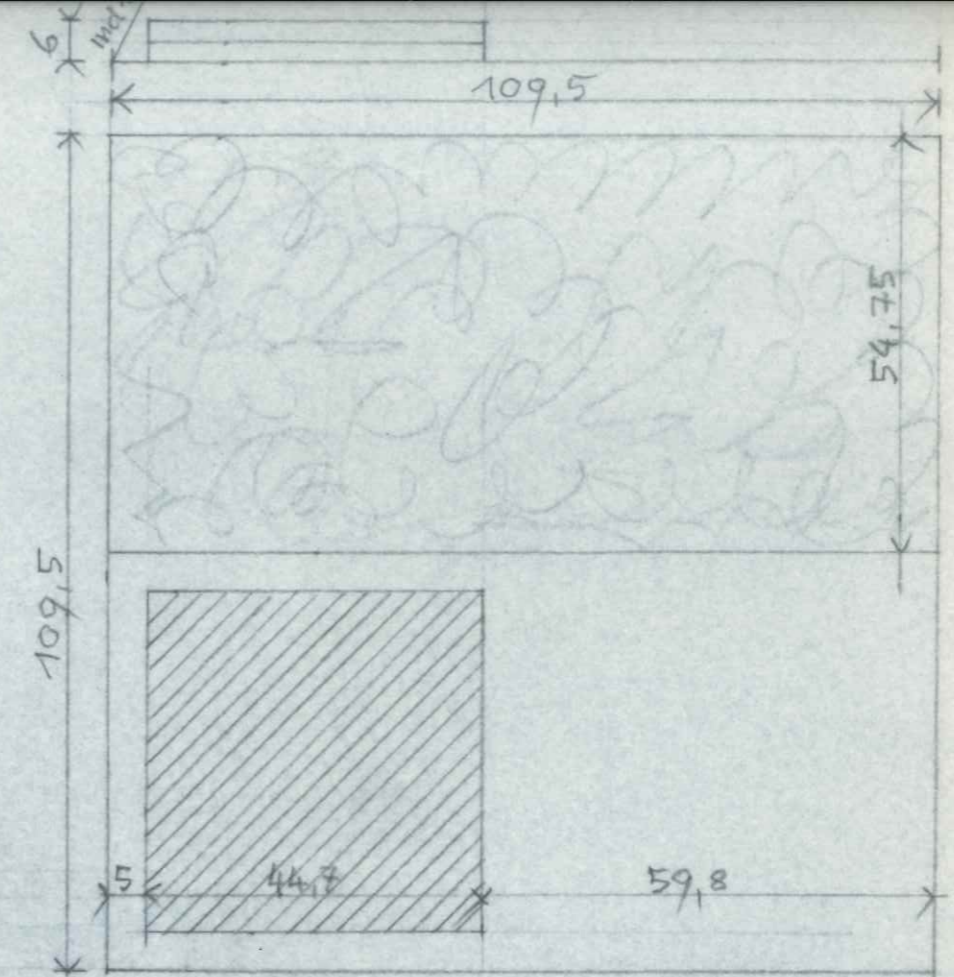
MQ 10.000
 MC 10.000



$h \text{ max } m 22,00$
 $\text{mq } 454$
 $m 21,3 \times m 21,3$
 verde ad alto
 fusto mq 5.000

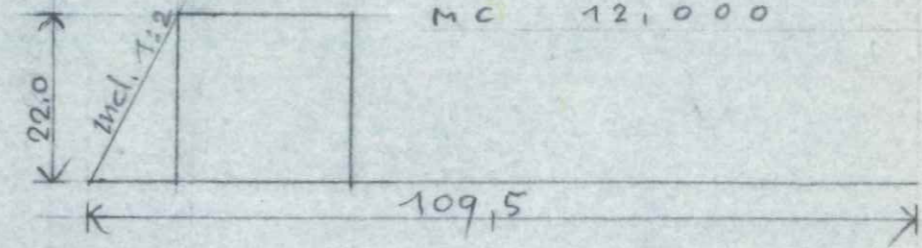
MQ 10.000
 MC 10.000

$m 22,00$
 2
 $5 \times m 18,45$
 ad alto
 mq 3750



COPERT. MASS.
 $1/6 = \text{mq } 2000$
 $m 44,7 \times m 44,7$
 $h = m 6$
 verde ad alto
 fusto mq 6.000

MQ 12.000
 MC 12.000



$h \text{ max } m 22,00$
 $\text{mq } 544$
 $m 23,3 \times m 23,3$
 verde ad alto
 fusto mq 6.000

MQ 12.000
 MC 12.000